

Identifying Gaps in the PM₁₀ Monitoring Network

- Where do we need monitor?
- Where do we monitor now?
- Where are the gaps?
- What do we do about the gaps?
 - ◆ (Gavin Fisher - Session 2)



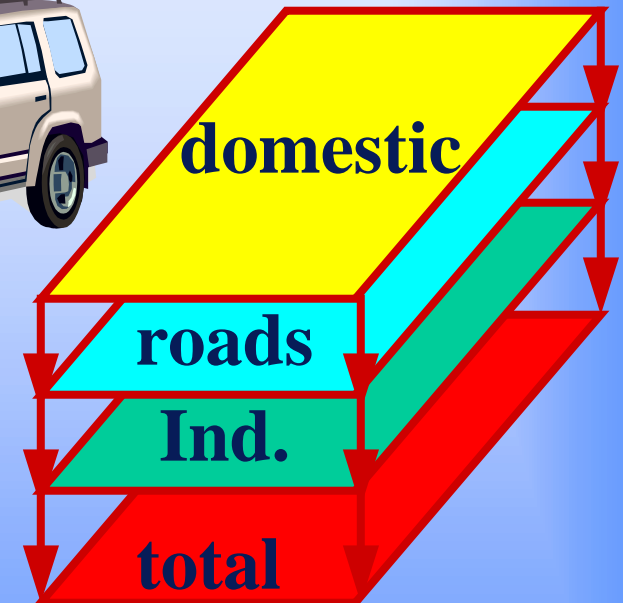
Where do we need to monitor?

- The NES defines Local Airshed Management Areas (LAMAs)
- How were the LAMAs identified?
 - ◆ Emissions/GIS framework

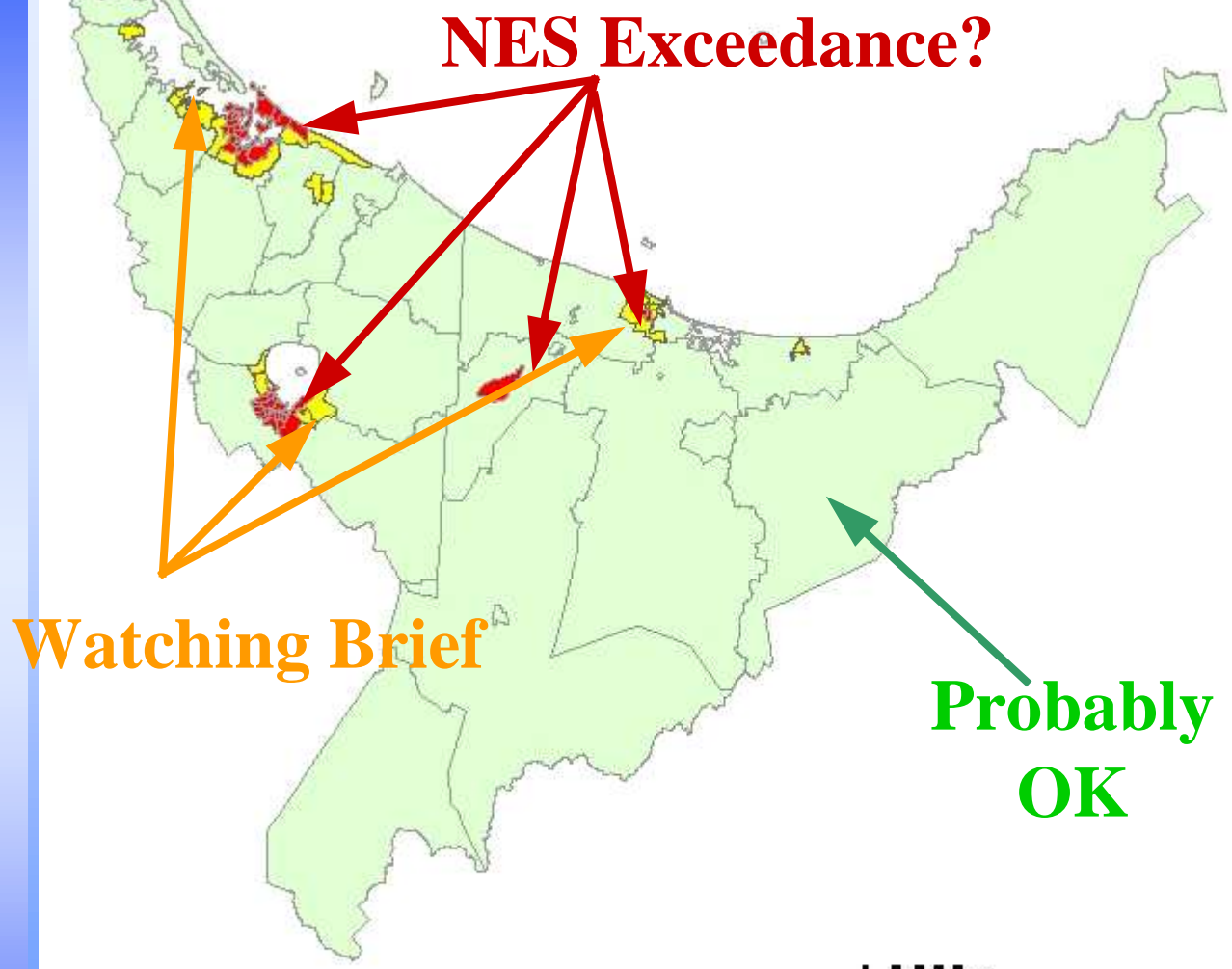


Defining LAMAs

- Region
 - ◆ Sub-divided into Census Area Units
- Three Emission Sources
 - ◆ Domestic
 - ◆ Roadway Transport
 - ◆ Industry
 - ☞ Total Emissions
- Categorise LAMA as either:
 - ◆ 1. Known or likely to exceed standard
 - ◆ 2. To be watched
 - ◆ 3. Unlikely to exceed standard



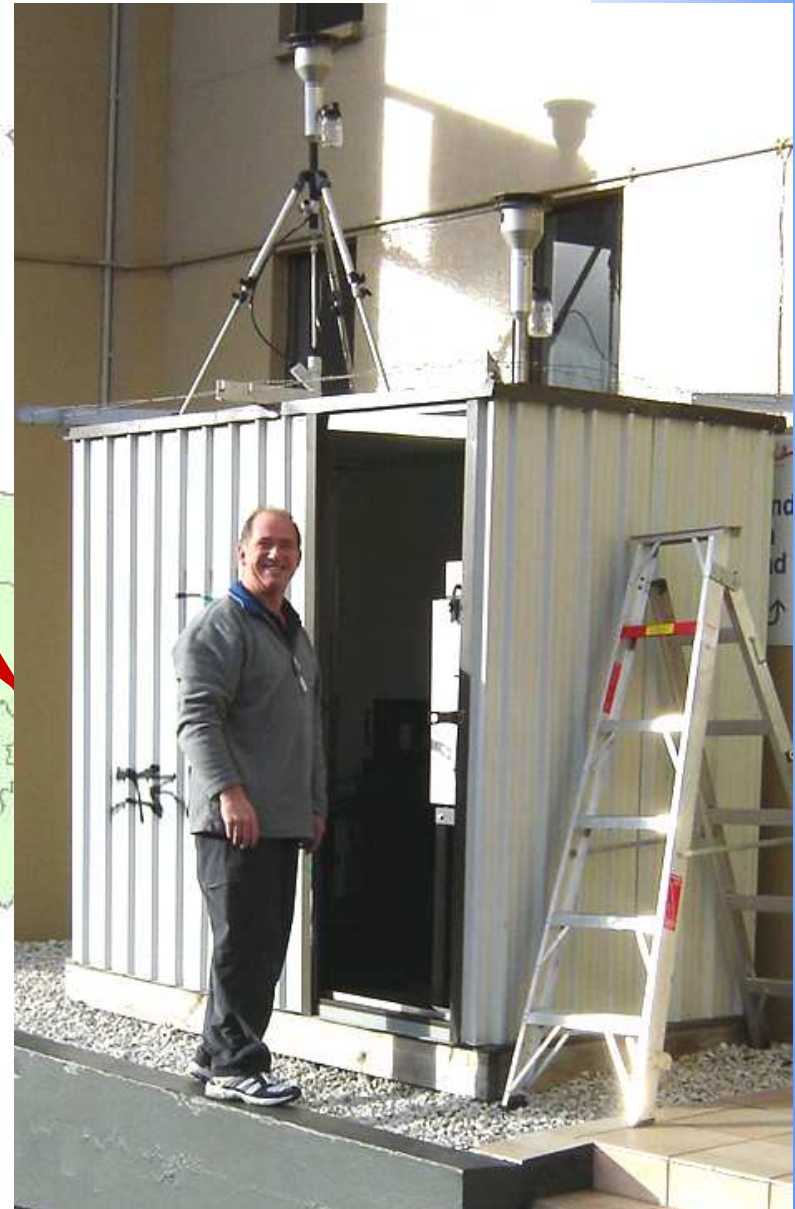
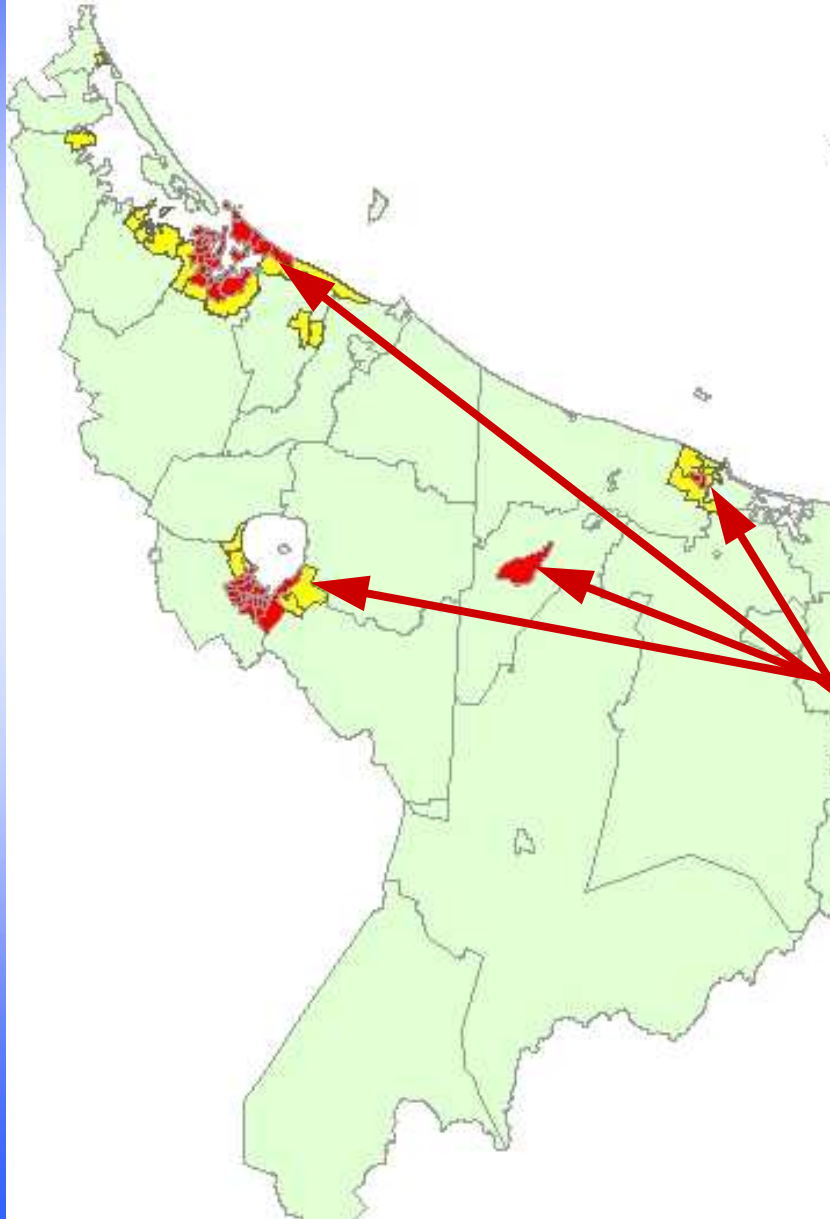
Example Day of Plenty



LAMA Categorisation

- LAMAs**
- Category 1
 - Category 2
 - Category 3
 - Industry source

Where Should We Monitor?



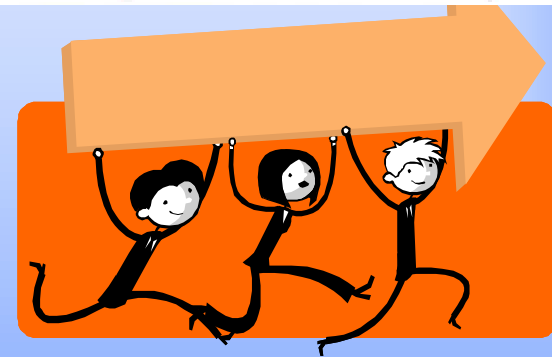
Where do we monitor now?

■ Information

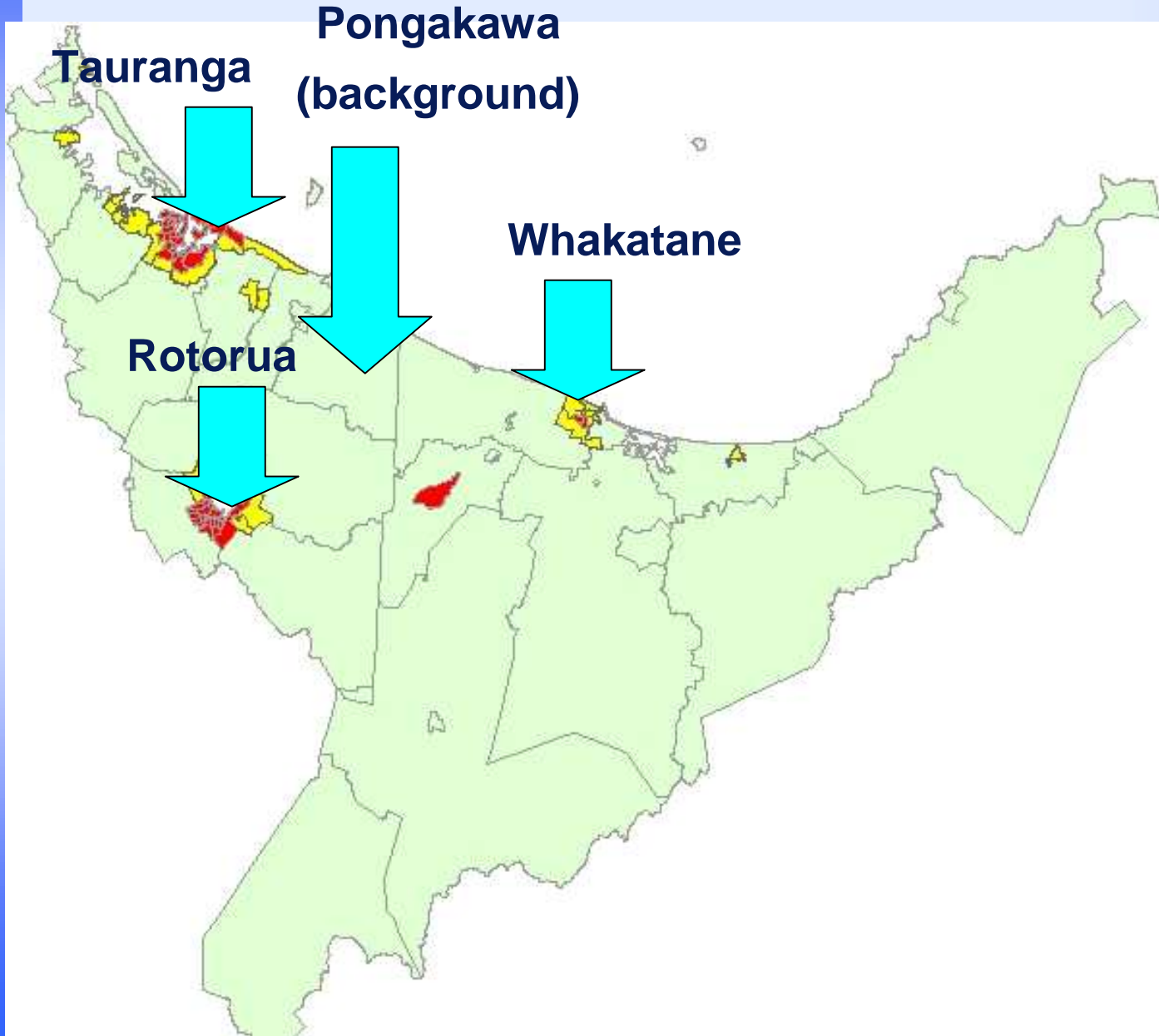
Sources used:

- ◆ Web-available information
- ◆ Team knowledge
- ◆ Regional Councils

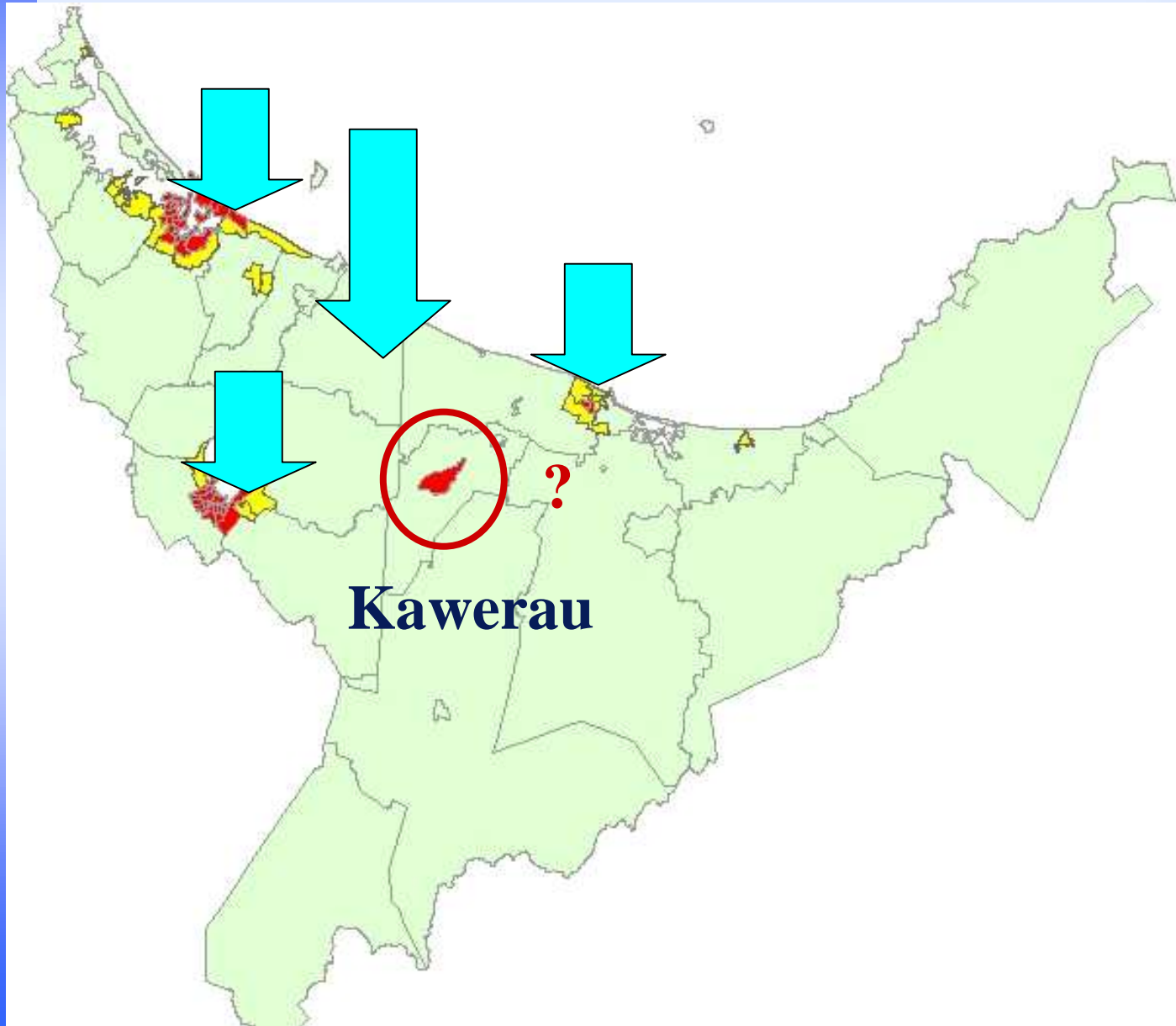
☞ (those we managed to speak to)



Where do we monitor now? BOP

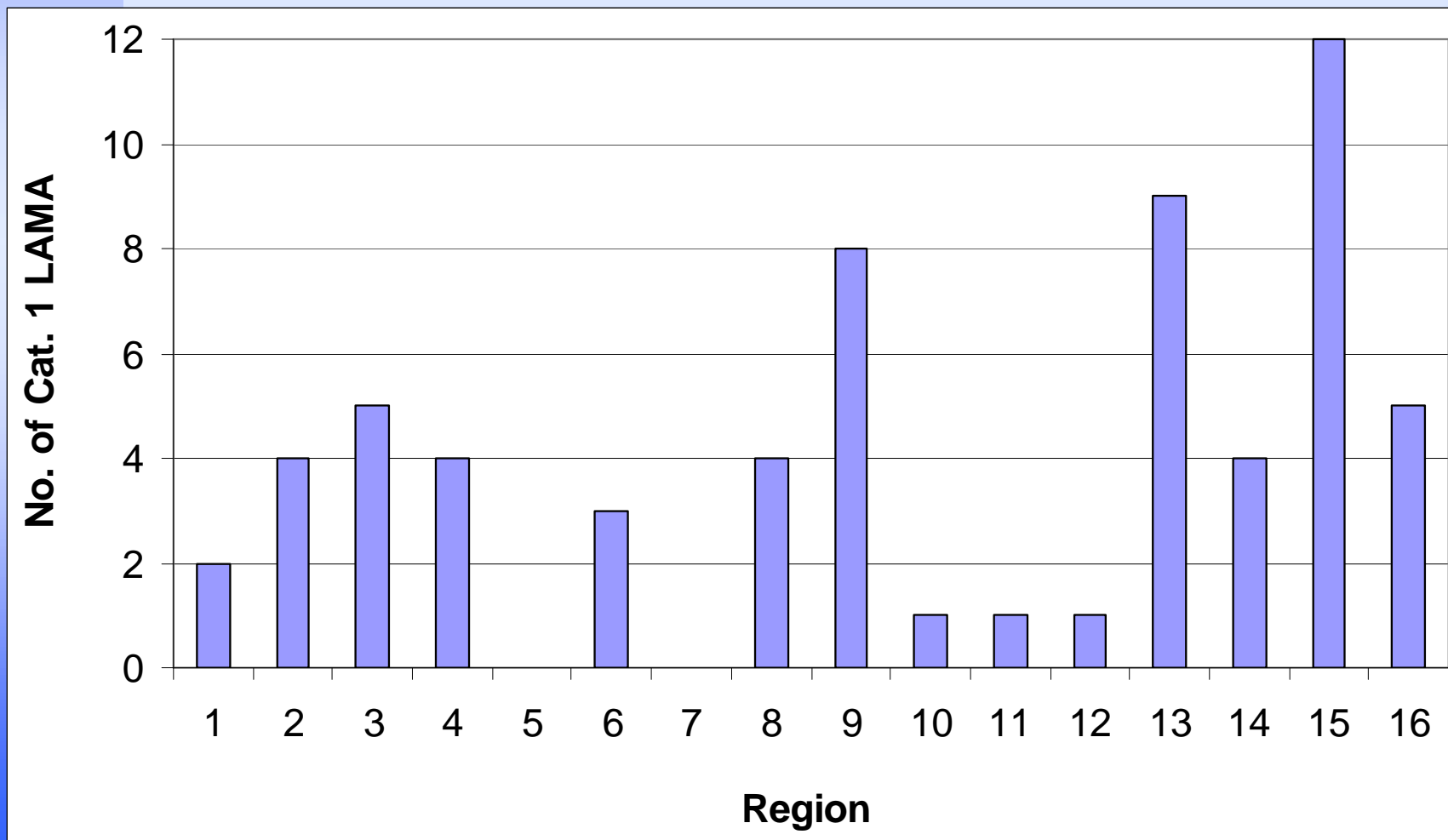


Network Gaps: BOP



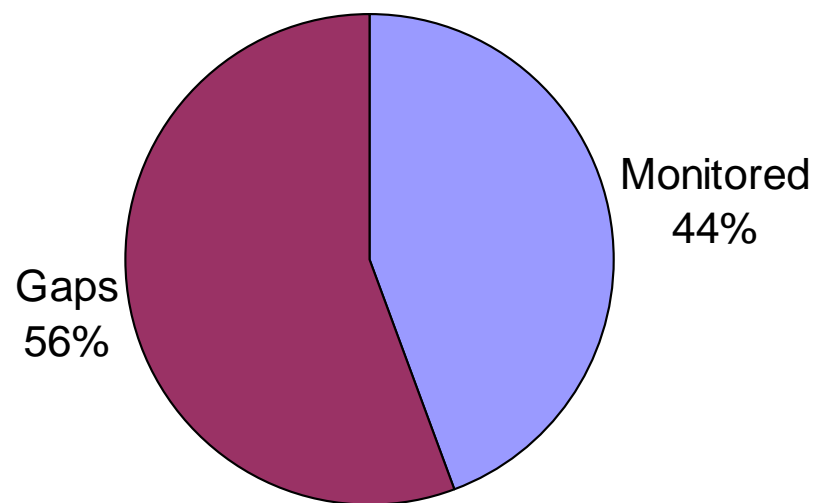
Nation Wide Summary

- Approximately 63 Category 1 LAMAs



Nation Wide Summary: Gaps

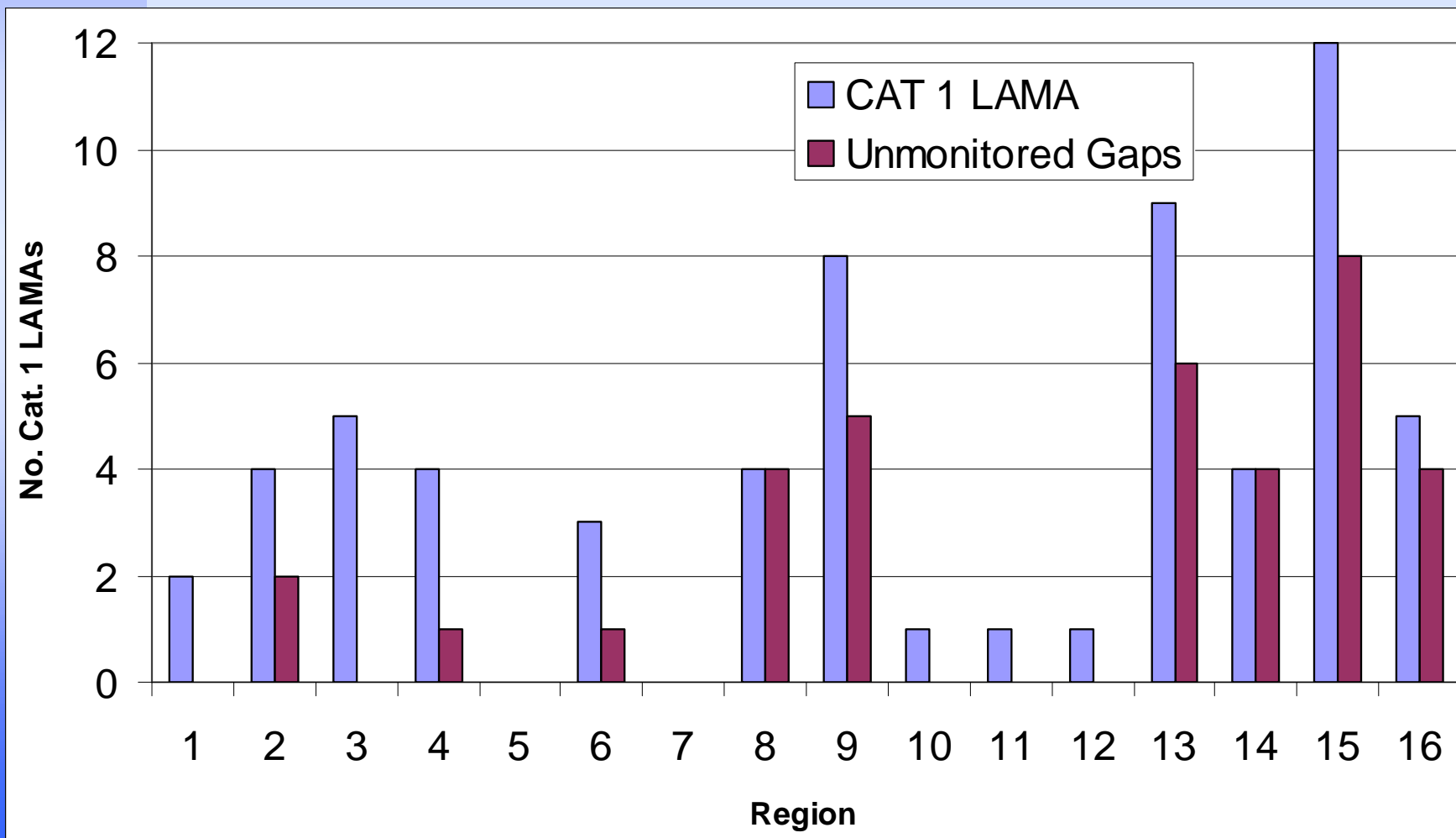
- Approx 63 Category 1 LAMAs
- Upper estimate of Gaps: 35



Nation Wide Summary



■ Gaps by Region



Where to from here?

- Feedback to us
 - ◆ 2004 and 2005 data
 - ◆ Planned sites
- Revise Section 1 of Review and Gap Analysis Report
 - ◆ Section 1 will benefit from Regional Council Review
- What do we do about the gaps?
 - ◆ Gavin – next presentation

