

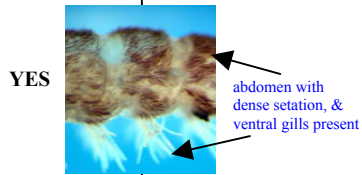
Quick guide to the MCI non-cased Trichoptera (excluding Hydrobiosidae)

By Brian J. Smith

February 2003



Hydropsychidae



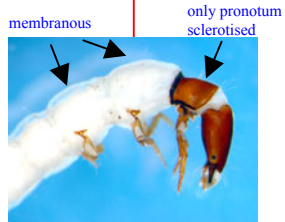
Are branched abdominal gills present ventrally & abdominal setation conspicuous?



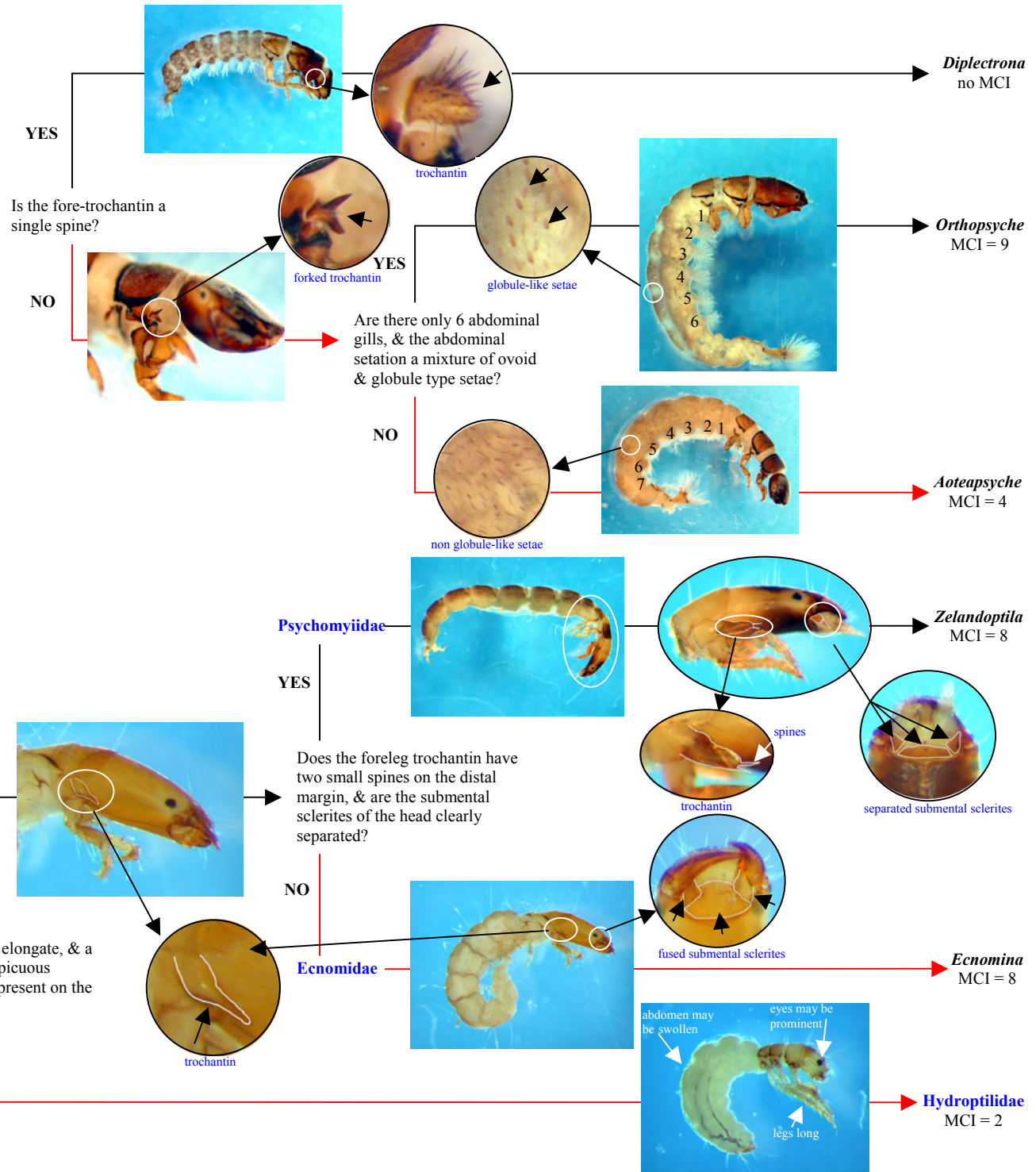
NO

Are all 3 thoracic segments sclerotised?

NO



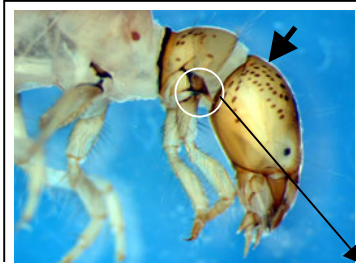
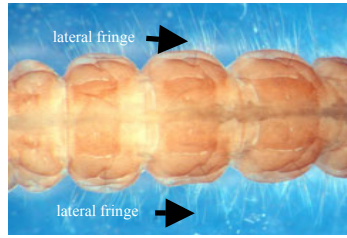
CONTINUED



CONTINUED

Are abdominal gills absent, & only the pronotum sclerotised?

YES



Polycentropodidae

YES

Does the head & pronotum have prominent spots, & is the foreleg trochantin long & sharp? Is there a fine lateral line of setae on the abdomen?

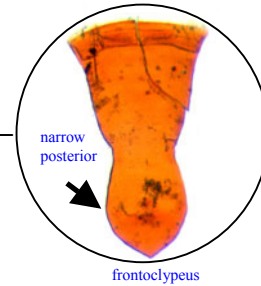
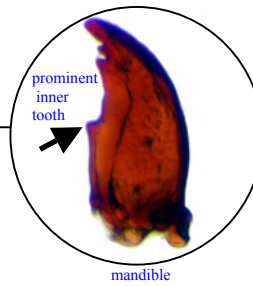
NO



Philopotamidae

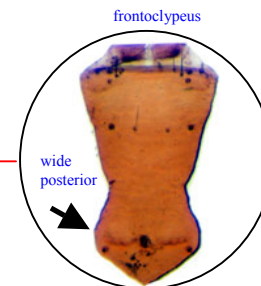
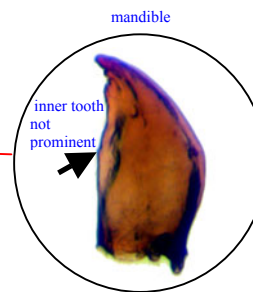
YES

Is the head reddish brown, & is posterior margin of the frontoclypeus narrower in width than the anterior? Do the mandibles have a prominent inner tooth?



Cryptobiosella
no MCI

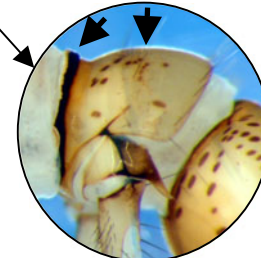
NO



Hydrobiosella
MCI = 9

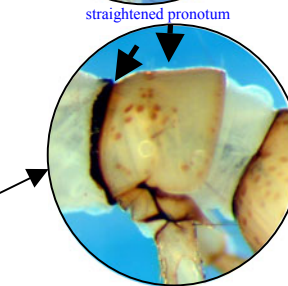
YES

Is the dorsal surface of the pronotum noticeable curved in lateral view?

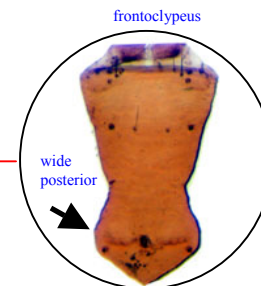
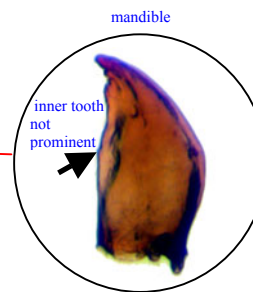


Polypectropus
MCI = 8

NO



Plectrocnemia
MCI = 8



Hydrobiosella
MCI = 9