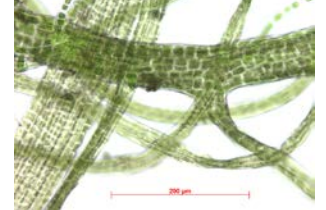
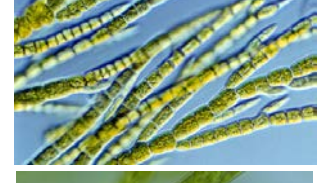
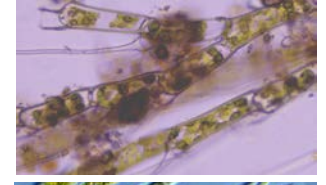
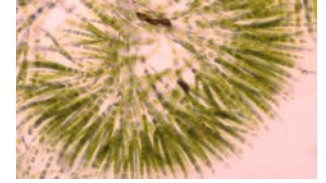
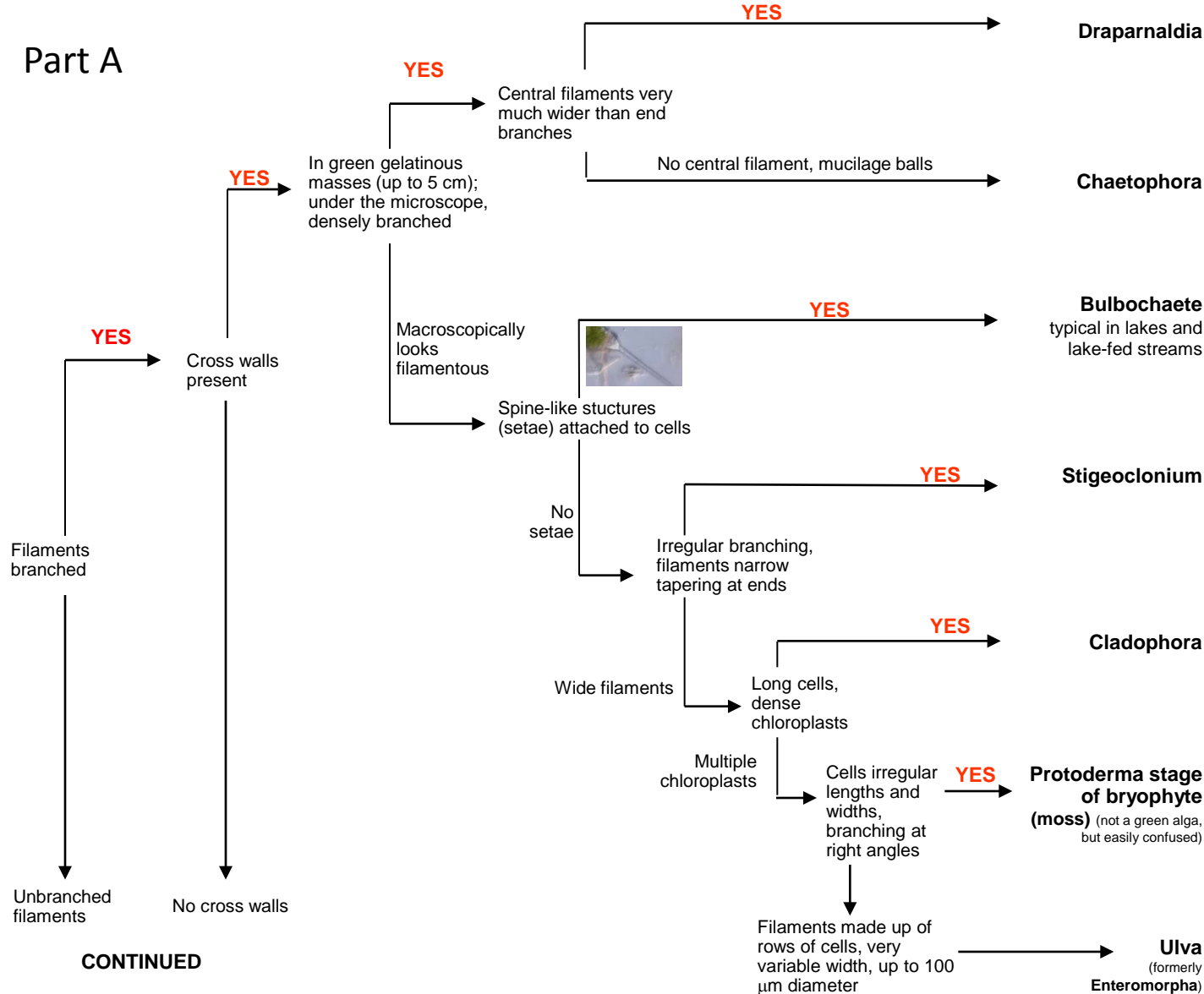
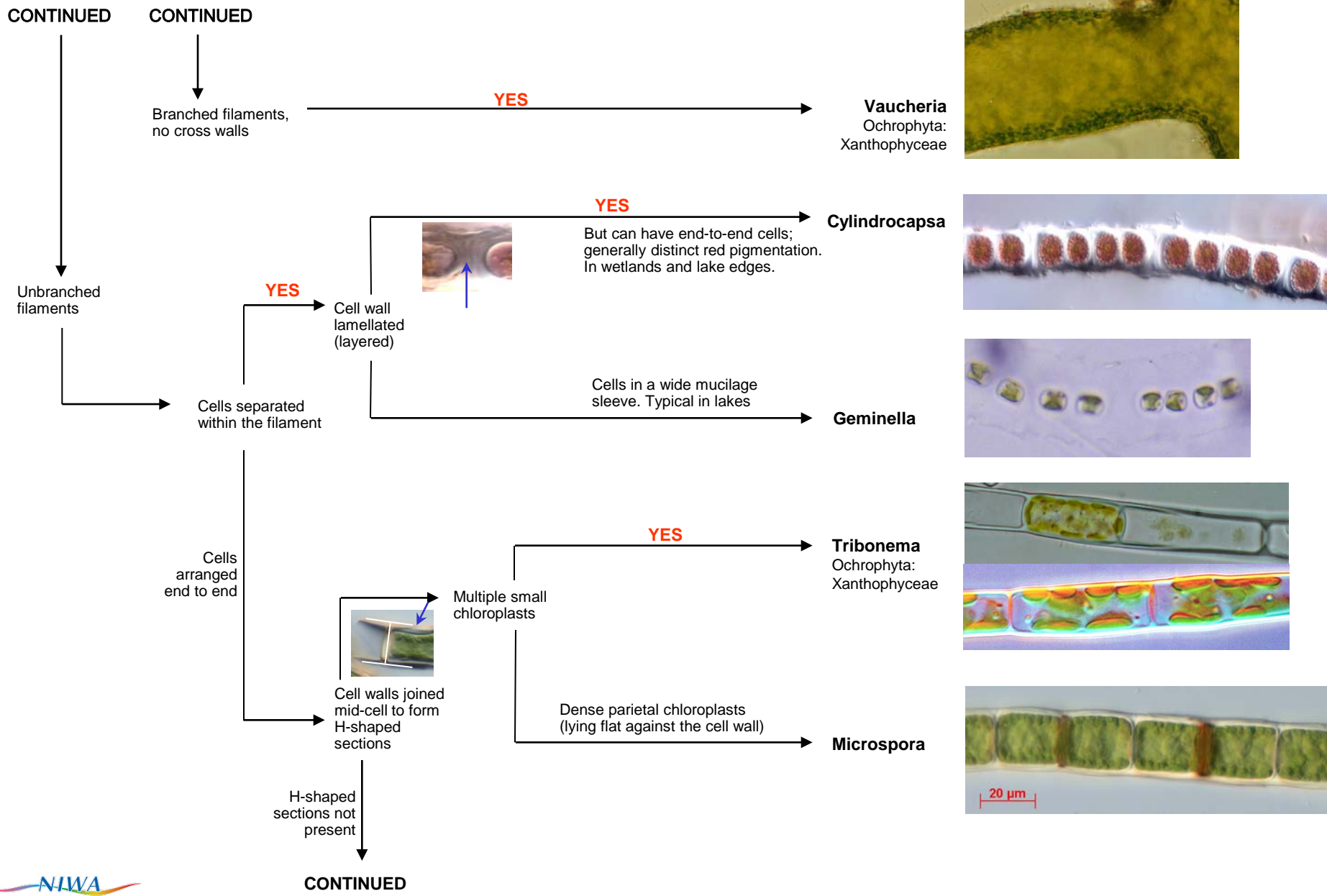


Quick-guide to common filamentous green algae New Zealand fresh waters

(All genera belong within the Chlorophyta, except for two within Ochrophyta: Xanthophyceae)

Part A





Quick-guide to common filamentous green algae

Part C

CONTINUED

Filaments not branched

Cells arranged end to end

No H-shaped sections in cell walls

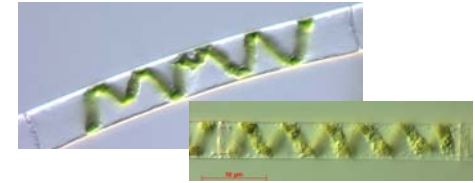
Chloroplast a lengthwise sheet or ribbon, flat or twisted

YES

Chloroplast clearly spiral

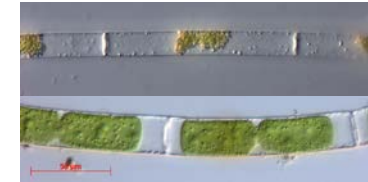
YES

Spirogyra



Chloroplast a lengthwise sheet

Mougeotia

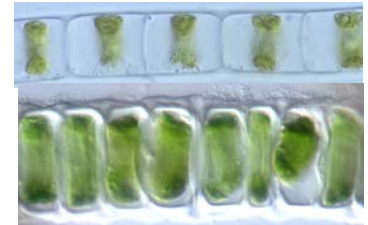


Chloroplast parietal (lying flat against the cell wall)

YES

Chloroplast a distinct ring or near-complete ring

Ulothrix



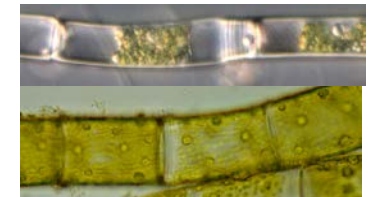
Chloroplast covering a small portion of the cell wall

Klebsormidium



Chloroplast large, reticulate (like a net)
Scarring (concentric rings) on some cells

Oedogonium

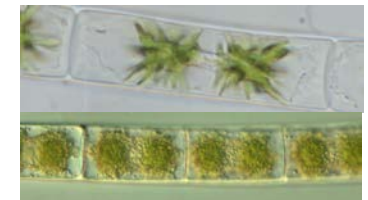


Chloroplasts otherwise

Chloroplasts in pairs

YES

Zygnema



Dense reticulate chloroplasts

Very long cells

Rhizoclonium



For short cells, check *Melosira* (see diatom key)