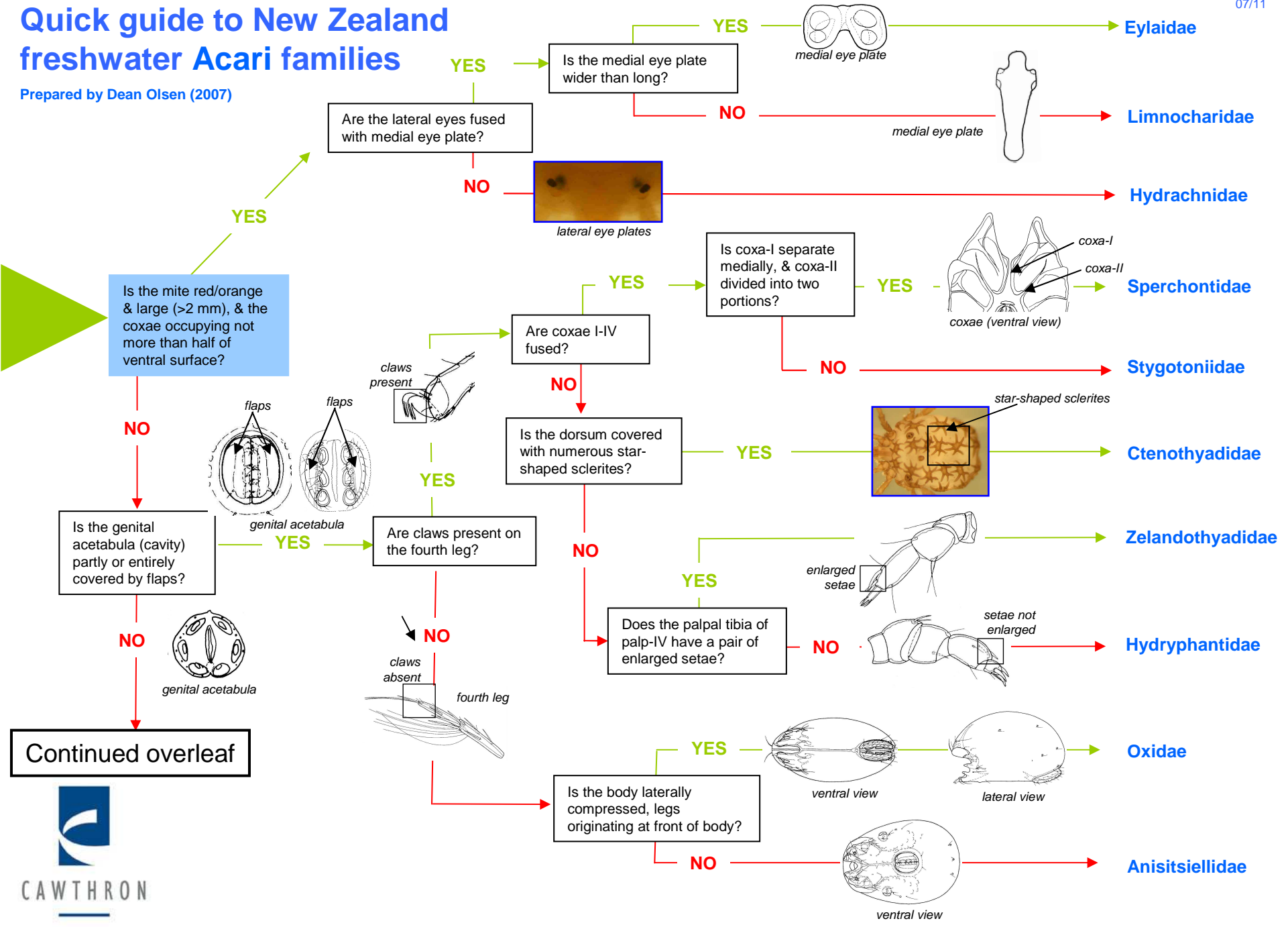


# Quick guide to New Zealand freshwater Acari families

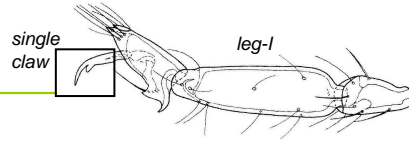
Prepared by Dean Olsen (2007)



Continued from previous page

Does the tarsus of leg-I have a single, proximally-directed claw?

YES

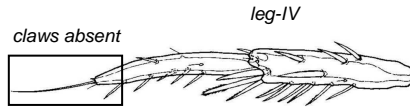


Momoniidae

NO

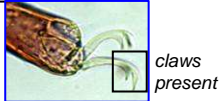
Does leg-IV lack claws?

YES



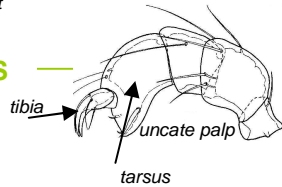
Limnesiidae

NO



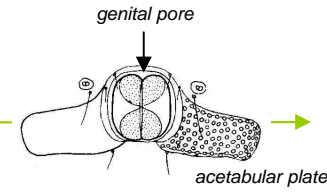
Are the palps uncate (tarsus able to fold against tibia)?

YES



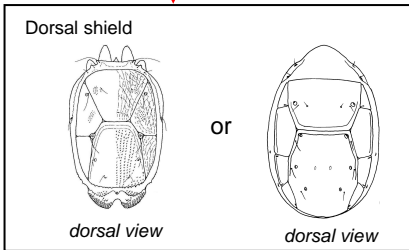
Is the genital pore flanked by two plates bearing numerous acetabula?

YES



Arrenuridae

NO



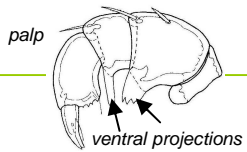
YES

Aturidae (Notoaturinae)

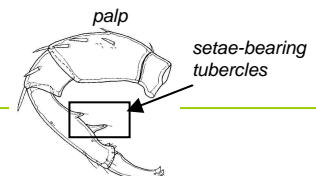
NO

Do palps-II & III have transparent plate-like ventral projections?

YES



YES



Mideopsidae

Pionidae

NO

Do the pedal claws lack lobed ventral clawlets, (associated with sponges)?

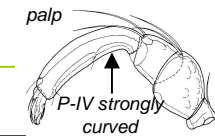
NO

Do the palps have two setae-bearing tubercles on the ventral surface of P-IV?

NO

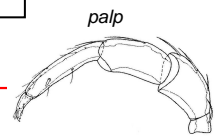
Is P-IV strongly curved?

YES



Nudomideopsidae

NO



Hygrobatidae

YES

Unionicolidae

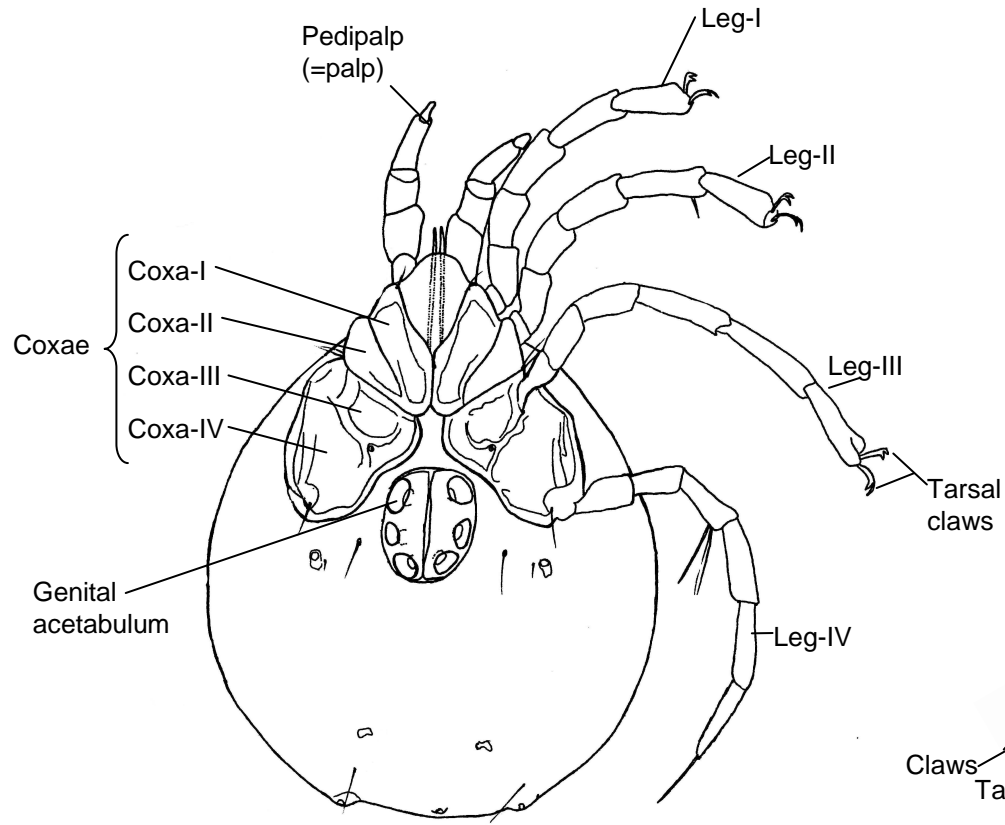


This Quick guide was funded by Terrestrial and Freshwater Biodiversity Information System (TFBIS) programme number 194.

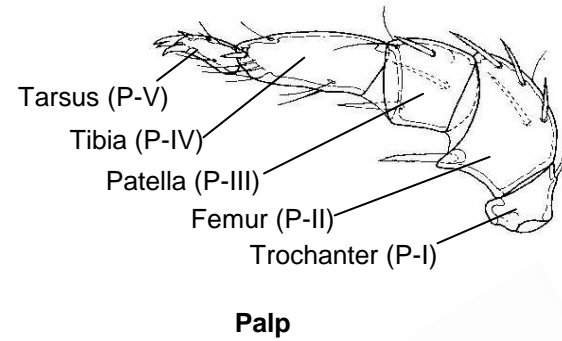
References: Cook, D.R. (1983). *Contributions of the American Entomological Institute* 21(2). 224 p. Figures reproduced with permission.  
 Cook, D.R. (1991). *Stygologia* 6: 235-253.  
 Smit, H. (1996). *Acarologia* XXXVII, 45-53.

# Water mite anatomy

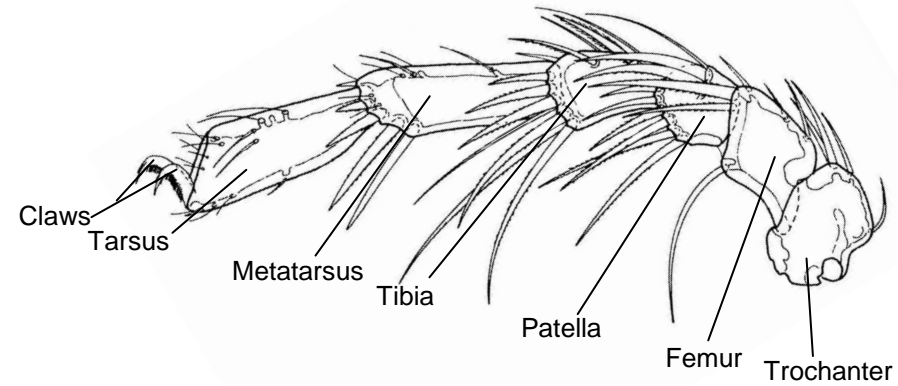
Prepared by Dean Olsen (2007)



*Limnesia zelandica*, ventral view



Palp



Leg



This Quick guide was funded by Terrestrial and Freshwater Biodiversity Information System (TFBIS) programme number 194.

**Reference:** Cook, D.R. (1983). *Contributions of the American Entomological Institute* 21(2). 224 p. Figures reproduced with permission.