



Pacific
Community
Communauté
du Pacifique



NIWA
Taihoro Nukurangi

PARTneR-2

Pacific Risk Tool for Resilience, Phase 2

Cook Islands | Republic of Marshall Islands | Samoa | Tonga | Tuvalu | Vanuatu

Hazard risk modelling tools can help decision makers to better prepare for and respond to disasters and to make sound economic and land-use planning decisions. PARTneR-2 will address a critical gap across the Pacific region in the availability and use of low-cost and easily-applied tools to support risk-informed decisions.

The three-year PARTneR-2 project aims to help countries in the Pacific become more resilient to the impacts of climate-related hazards. It builds on the pilot PARTneR project, which ran from 2016-2019.



About PARTneR-2

Resilience to climate-related hazards

PARTneR-2 will work across six Pacific Island Countries (PICs) to build capability to make risk-informed and effective development decisions. It will advance a shared understanding of the different needs for climate risk information and will co-develop national risk models and assessment tools with PICs.

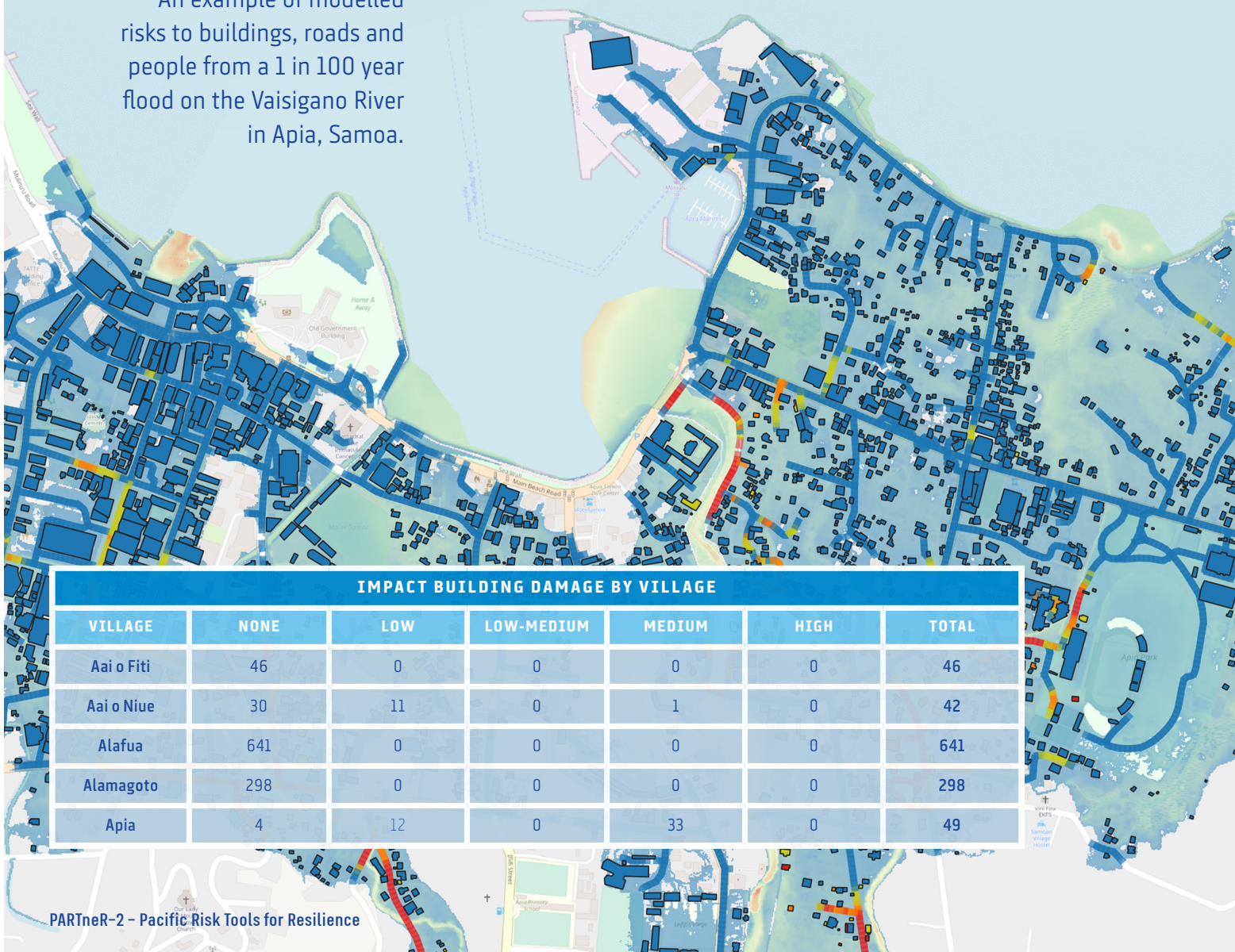
The project involves collaborating with central government agencies to identify their risk-information needs and priorities, and developing the required skills and capacity within technical line ministries to deliver actionable information to meet these needs.

Project delivery

The PARTneR-2 project is funded by the New Zealand Ministry of Foreign Affairs and Trade (MFAT). It is jointly delivered by the Pacific Community (SPC) and the New Zealand National Institute of Water and Atmospheric Research (NIWA), in collaboration with the partner countries.

PARTneR-2 will work closely with other partners and programs in the Pacific region to ensure efforts to inform risk-based decision-making are well aligned. It will support PICs to deliver on the Framework for Resilient Development in the Pacific (FRDP), the Sendai Framework for Disaster Risk Reduction, the Paris Agreement to the United Nations Framework Convention on Climate Change, and the United Nations' Sustainable Development Goals.

An example of modelled risks to buildings, roads and people from a 1 in 100 year flood on the Vaisigano River in Apia, Samoa.



Approach of PARTneR-2

The PARTneR-2 approach involves:

- Working through existing cross-government coordination mechanisms to integrate risk-assessment information and tools into in-country processes.
- Enhancing collaboration and coordination throughout the decision-making process.
- Formalising governance arrangements for data and analysis.
- Developing fit-for-purpose information products.
- Building capacity and raising awareness across all levels of decision makers.
- Training and use of risk assessment software (utilising RiskScape, see box below).
- Further developing technical capacity within SPC to underpin and support PICs.

Country-led risk information

Country-level risk models will be developed through initial national capacity development activities that will focus on assessing cyclone-related hazard impacts. Depending on datasets available and requirements of each partner country, risk information outputs will be customised to support information needs such as:

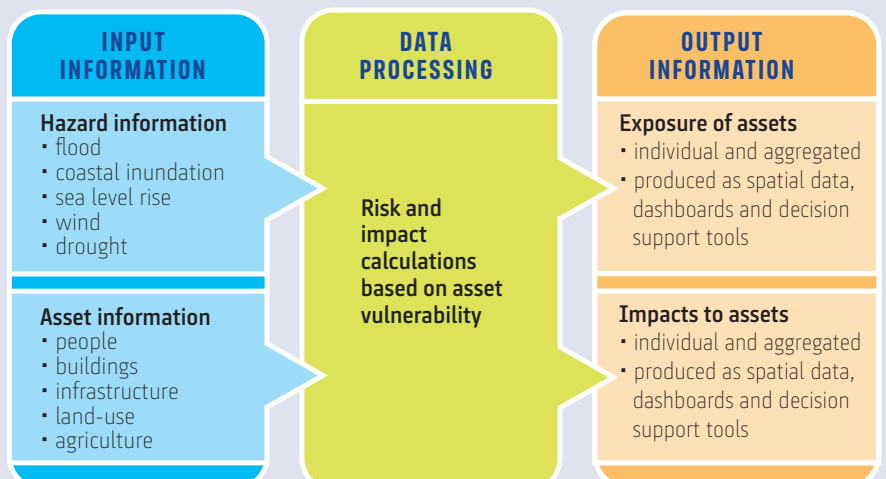
- Providing underlying exposure and risk information to support climate finance proposals.
- Developing reporting mechanisms for monitoring changing exposure and risk levels to inform local, national and international decision-making and reporting.
- Post-disaster, rapidly determining the level and extent of damage to support disaster response needs and priority areas.

Potential specific country activities (local and national) for integrating risk assessment into existing decision-making processes include:

- Impact-based forecasts for existing early warning systems.
- Land-use and development planning.
- Infrastructure strategic planning or risk assessment.
- Local disaster preparedness.
- For Tuvalu and the Republic of the Marshall Islands, extending the drought risk work commenced under the PARTneR pilot.

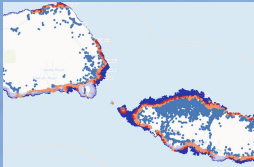
RiskScape

RiskScape is a multi-hazard impact assessment tool developed by NIWA and GNS Science. It enables estimates of the nature, severity, and extent of multi-hazard impacts over scales, from local (village) to national or regional level.



Outcomes and outputs

OUTCOME AREAS



Risk information is being produced to support effective decision-making and reporting in PICs through collaboration with partner programmes.



PICs have the skills and knowledge to use climate risk information in their decision-making and reporting processes.



Regional and peer-to-peer support is available and coordinated across PICs.

KEY OUTPUTS



National risk models for six PICs and regional capability is developed.



Climate-related risk outputs are defined and produced for key national and sectoral decision-making and reporting mechanisms.



Risk data collection and management is operational in six PICs in collaboration with aligned partner programmes.



Technical and end-user Communities of Practice (CoP) are operational within and between the six PICs and key regional support agencies.

Contact

Juli Ungaro
NIWA

Wellington
Aotearoa New Zealand
Tel: (+64) 4 382 1617
Email: juli.ungaro@niwa.co.nz

Eileen Turare
The Pacific Community (SPC)

Suva, Fiji
Tel: (679) 3379302
Email: eileent@spc.int