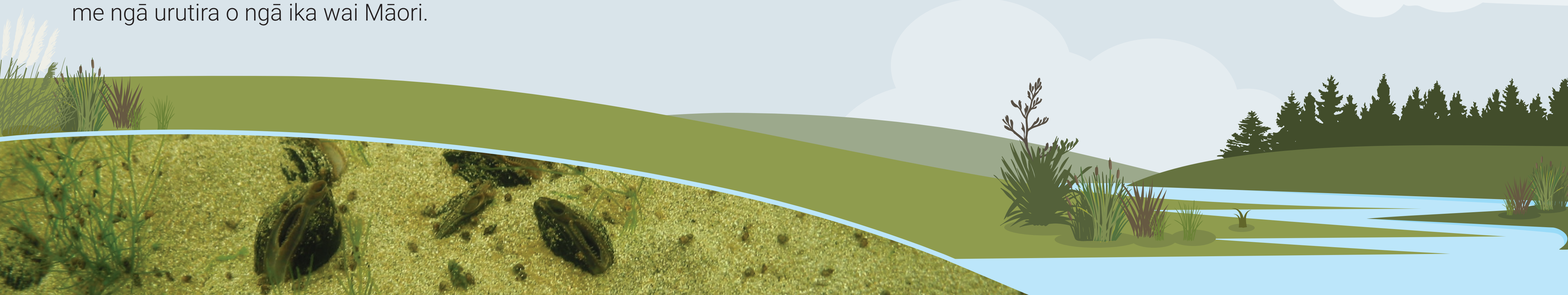


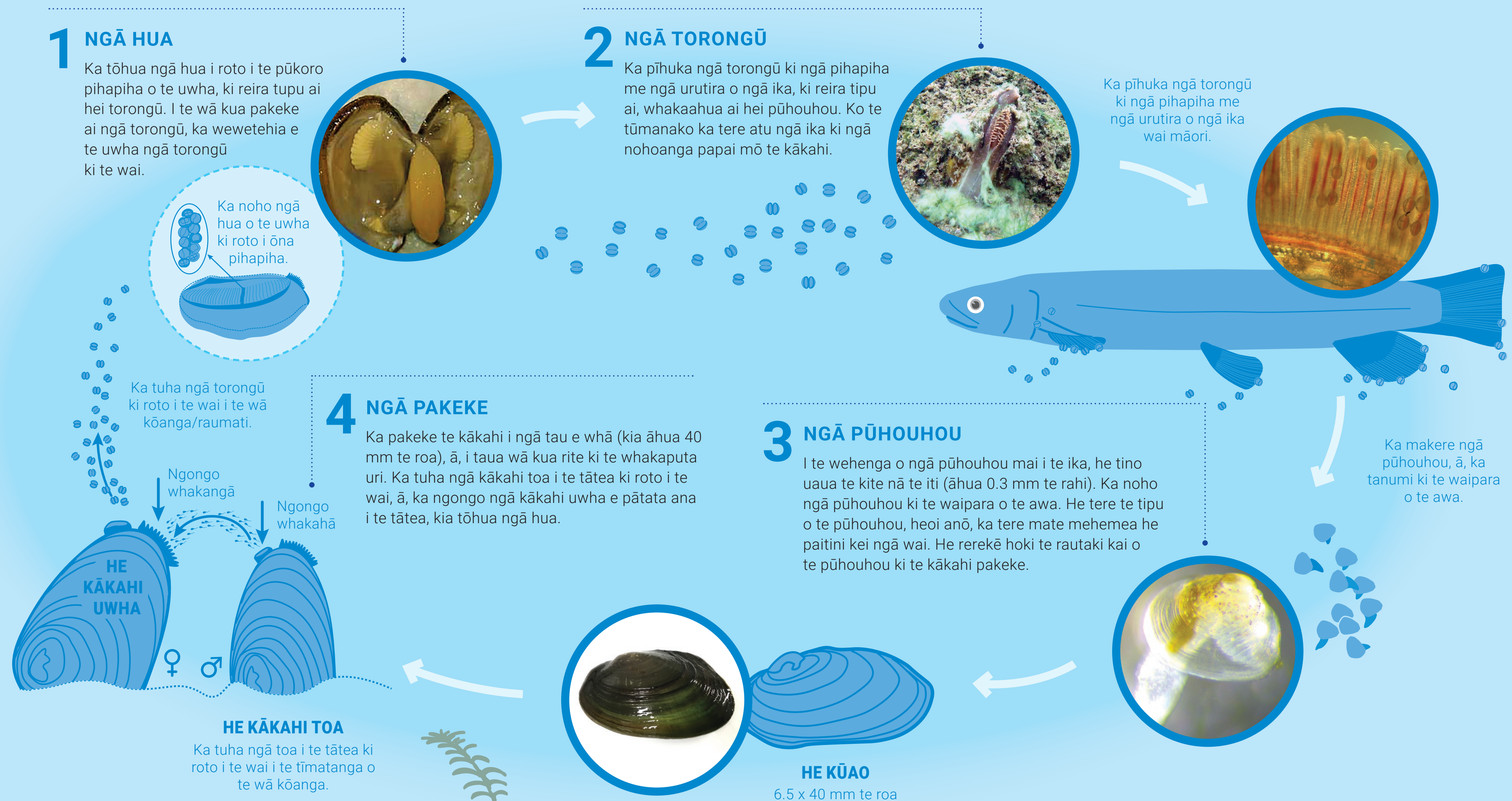
TE MATAORA O TE KĀKAHI

Ko te kākahi (kāeo, torewai rānei) he taonga taketake i ngā wai māori o Aotearoa. He rite te hanga o te kākahi ki te kūtai o te moana. He pirinoa te wāhanga torongū o te mataora o te kākahi arā, he āpiti atu ki ngā pihapiha me ngā urutira o ngā ika wai Māori.



Kupu Taka

- Mokorea – scarce, rare
- Ngongo whakahā – exhalant siphon
- Ngongo whakangā – inhalant siphon
- Paraheahea – vulnerable (endangered status)
- Pihapiha – gills
- Pirinoa – parasitic, parasite
- Pūhouhou – young, juvenile
- Takarepa – deficient
- Toa – male
- Tōhua – fertilise, fertilisation
- Urutira – fins
- Uwha – female
- Waipara – sediment
- Whakaahua – transform
- Whakamōrea – at risk (of being endangered)
- Whakaweti – threatened (endangered status)



E TORU NGĀ MOMO KĀKAHI I AOTEAROA



Echrydella menziesii

E kitea noatia ana tēnei o ngā momo kākahi i Aotearoa.

! E whakamōrea ana, e mimiti ana



Echrydella onekaka

He momo mokorea e kitea ana ki te hauāuru-mā-raki o Te Wai Pounamu.

! Takarepa ana ngā raraunga



Echrydella aucklandica

He momo (kāore i te tino maha) e kitea ana ki Te Tai Tokerau tae atu ki Waikato, ki ngā wāhi taratahi o te Te Ika-a-Māui me Te Wai Pounamu anō hoki.

! E whakaweti ana, e paraheahea ana.

Tirohia te whārangi ipurangi
niwa.co.nz/te-kuwaha/kakahi

