

KĀKAHI LIFE CYCLE

Kākahi (also known by the names kāeo and torewai) are a native species of freshwater mussel found in Aotearoa-New Zealand. Kākahi depend on native fish, because for part of their life cycle their larvae are fish parasites, attaching themselves to the gills and fins of fish.

THERE ARE THREE SPECIES OF KĀKAHI IN AOTEAROA



Echyridella menziesii

The most common species, found all over Aotearoa.

⚠ *At risk, declining status*



Echyridella onekaka

A very rare species found only in the northwest of the South Island.

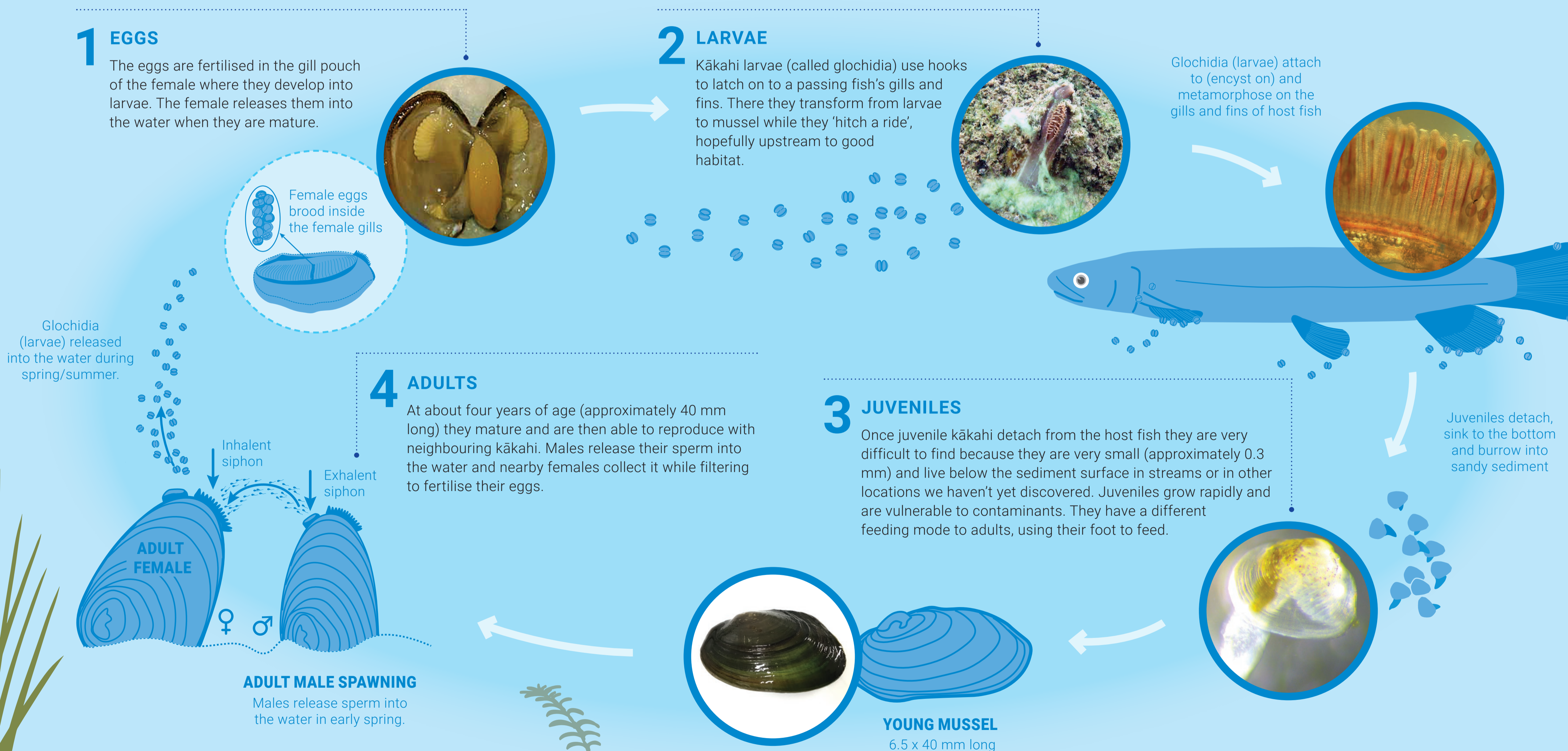
⚠ *Data deficient status*



Echyridella aucklandica

An uncommon species found in the North Island from Waikato northwards and in isolated pockets of the lower North and the South Island.

⚠ *Threatened, nationally vulnerable status*



For more information visit niwa.co.nz/te-kuwaha/kakahi

